



CAROLINA BEACH & VICINITY COASTAL STORM RISK MANAGEMENT

FY26 CSRMR Renourishment Contract Kure Beach, NC

17 November 2025

Wilmington District

Kent Tranter, Project Manager
Rolando Serrano, Contracting Officer's Representative
T.J. Knight, Design Engineer



U.S. ARMY



**US Army Corps
of Engineers®**



U.S. ARMY

FY25/26 CAROLINA BEACH / KURE BEACH, NC COASTAL STORM RISK MANAGEMENT (CSRMR)



2



LOCATION: New Hanover County, NC

DREDGE TYPE: Pipeline

BEACH FILL QUANTITY: ~1,557,000 CY

Carolina Beach: ~800,000 CY

Kure Beach: ~757,000 CY

AWARD: May 8, 2025 (Norfolk Dredging Co.)

Total Contract Cost: \$23,480,000

Carolina Beach: \$9,758,250

Kure Beach: \$13,721,750

START DREDGING: November 16, 2025

DREDGE COMPLETE: April 30, 2026

ENVIRONMENTAL WINDOW:

November 16 – April 30 (Beach Placement)

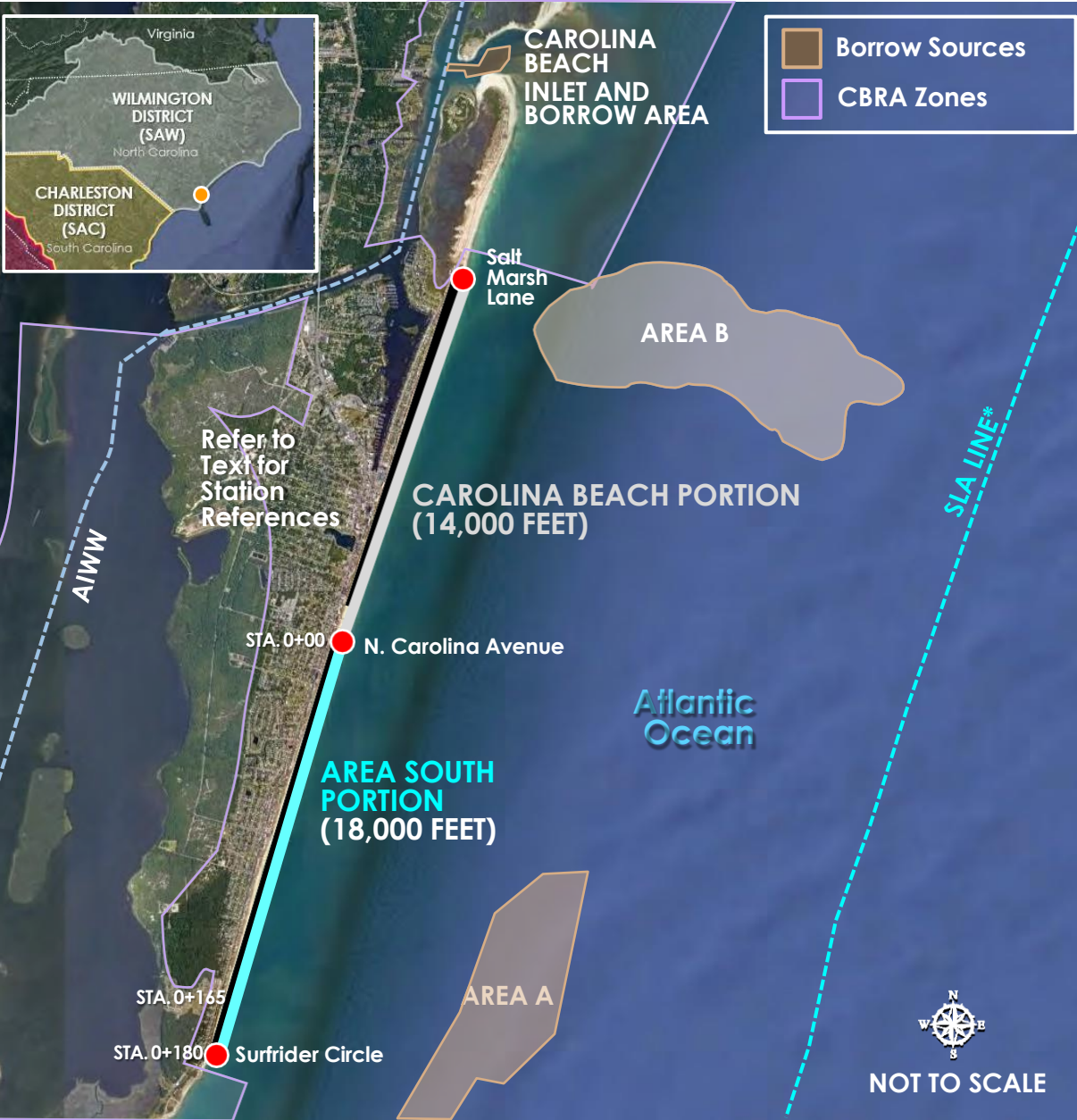
Data SIO, NOAA, U.S. Navy, NGA, GEBCO
Image © 2025 Airbus

U.S. ARMY CORPS OF ENGINEERS | WILMINGTON DISTRICT

CAROLINA BEACH AND VICINITY (AREA SOUTH PORTION)

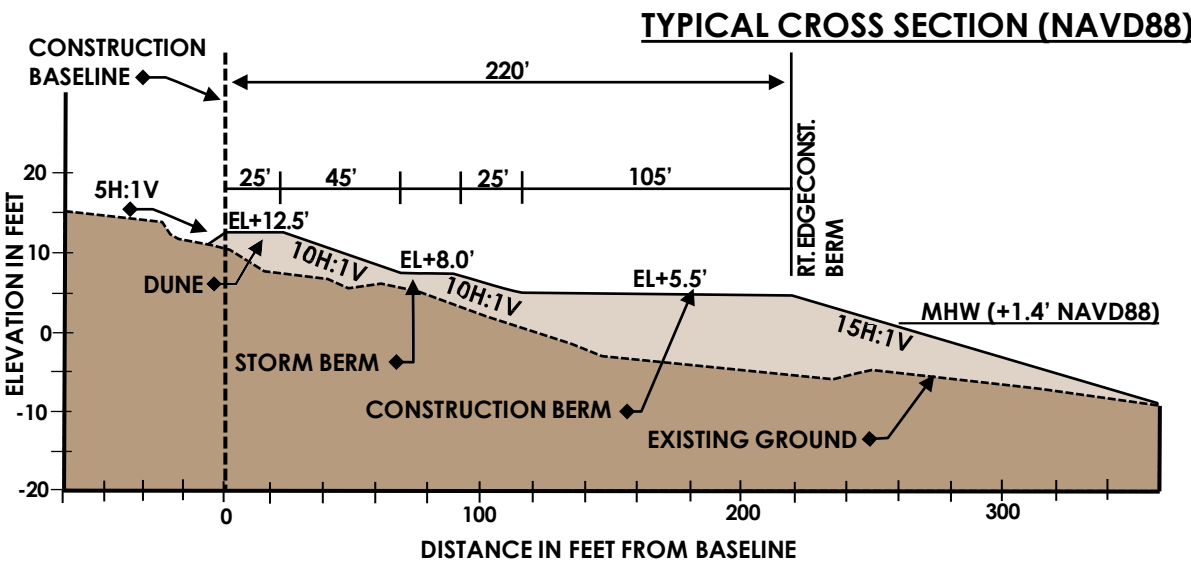
COASTAL STORM RISK MANAGEMENT PROJECT

Local Sponsor: Town of Kure Beach | End of Federal Participation: 2047



- **ESTIMATED NOURISHMENT VOLUMES/FREQUENCY:** ~757,000 cubic yards with a 3-year periodic nourishment schedule over a total length of 18,000 feet.
- **DUNE WIDTH:**
 - ▶ 25-foot berm at 12.5 Feet NAVD88; dune extends approximately 18,000 feet from Stations 0+00 to 180+00.
- **STORM BERM WIDTH:**
 - ▶ 50-foot berm at 8.0 Feet NAVD88; berm extends approximately 18,000 feet from Stations 0+00 to 180+00
- **CONSTRUCTION BERM WIDTH:**
 - ▶ 105-foot berm at 5.5 Feet NAVD88; berm extends approximately 18,000 feet from Stations 0+00 to 180+00.
- **BORROW SOURCES:** Borrow Area B.
- **SPECIAL CONSIDERATIONS:** The project has a 1,500-foot transition between Stations 165+00 and 180+00.

* SLA: Submerged Lands Act Boundary Line (delineates state and federal waters)





U.S. ARMY

PLACEMENT TRACKER

Link: [Carolina / Kure Beach Sand Placement Tracker](#)

4

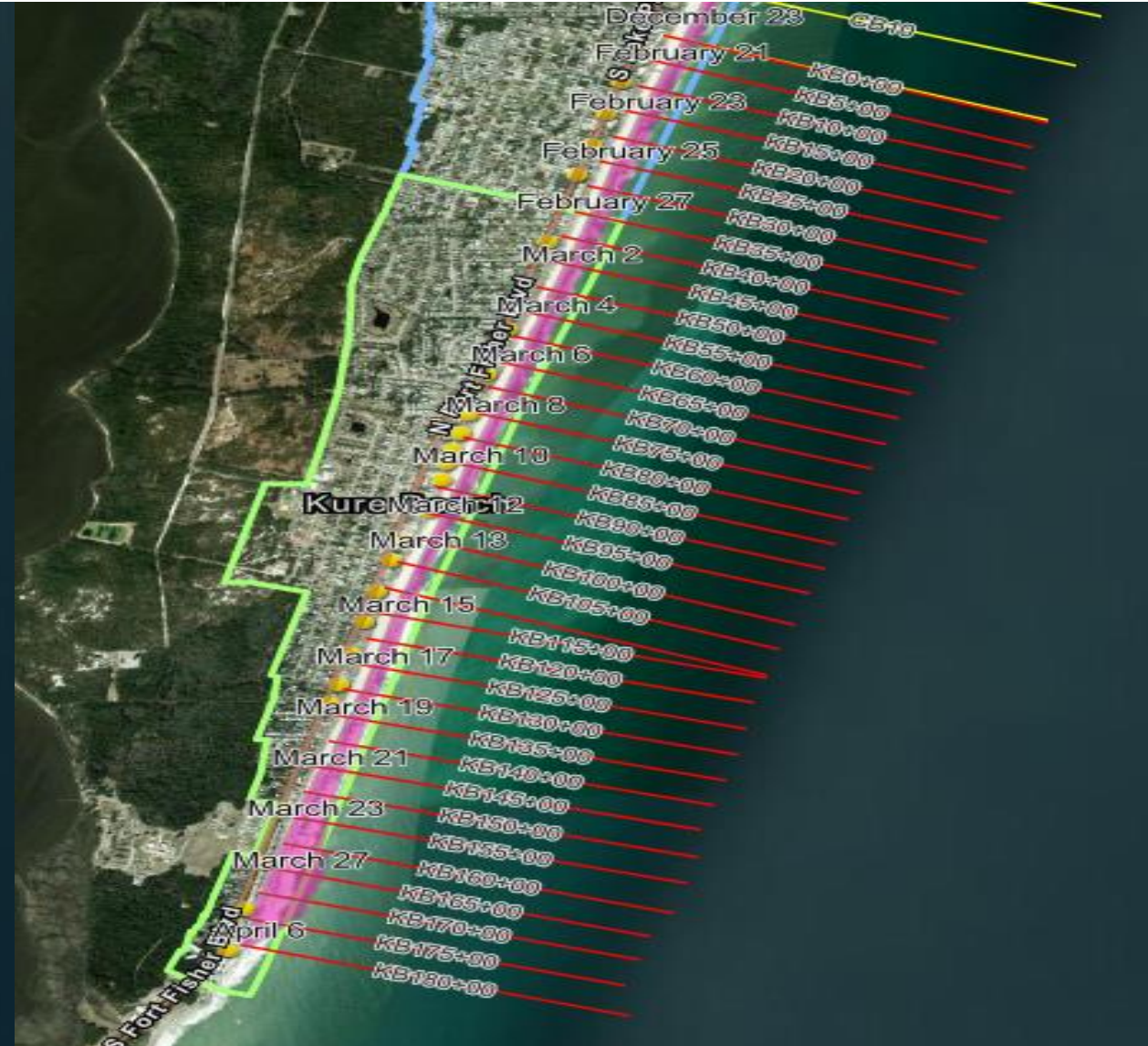
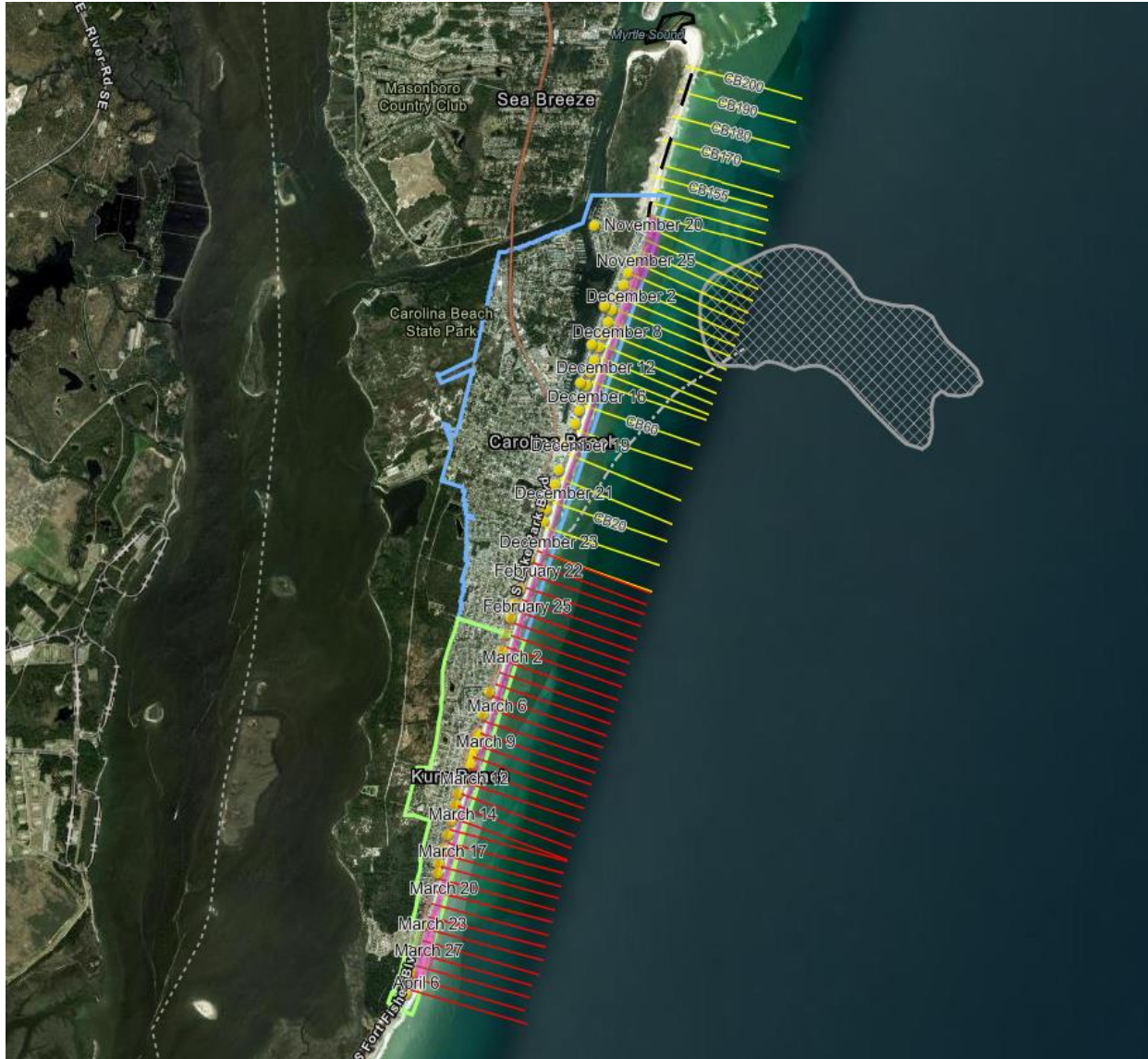




Photo on 27 June 2022



US Army Corps
of Engineers

Carolina Beach – Winter 2022





US Army Corps
of Engineers

Carolina Beach CSRM – Winter 2022





US Army Corps
of Engineers

Carolina Beach – Winter 2022





U.S. ARMY



US Army Corps
of Engineers®



Example Sand Placement Video

Wrightsville Beach
Renourishment Project



WILMINGTON DISTRICT POINT OF CONTACT

Kent Tranter – Senior Project Manager

Civil Works Programs & Project Management Branch

E-Mail: Kent.Tranter@usace.army.mil

Link: [**Carolina / Kure Beach Sand Placement Tracker**](#)